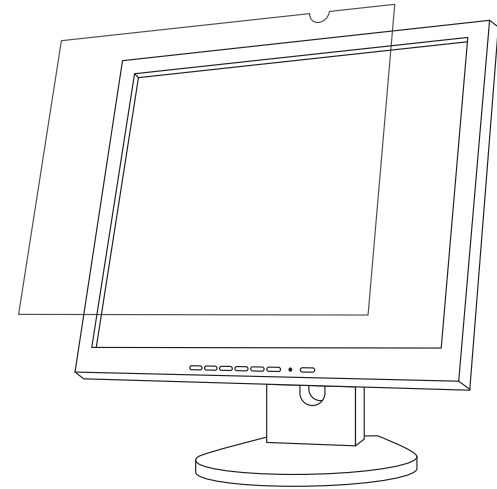


MACALLY

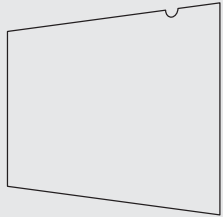
www.macally.co.kr



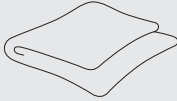
User's Guide
사용 설명서

MACALLY

구성품 CONTENTS



모니터 필름
Macally Monitor Filter



극세사 천
Cleaning Cloth



행탭(거치용)
Hang-Tab



양면테이프(부착용)
Double-sided Tape

주의사항 CAUTION

- 보호지는 필름 한쪽 면에만 있습니다. (모니터에 닿는 면 : 유광)
- 필름 방향 : 반원 부분은 우측 상단에 위치 하도록 합니다.
- 양면테이프 부착 시 최대한 모서리에 가깝게 붙여 줍니다.
- There's only one protection film on one side, where it touches the monitor. (Glossy side)
- The monitor filter should be applied on the screen with the half circle placed at the top right side.
- Double sided tape should be applied nearest on the corner.

부착방법 INSTALLATION

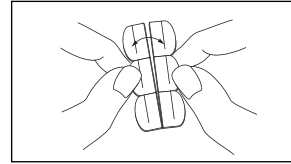
부착 전 모니터 액정을 극세사천으로 깨끗이 닦아줍니다.

Carefully clean monitor surface with the enclosed cleaning cloth.

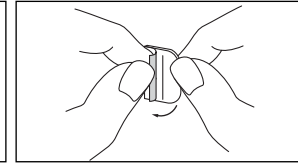


행탭 부착방법 INSTALLATION WITH HANG-TAB

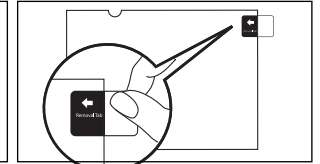
- * 필름의 보호지는 필름 한쪽 면에만 있습니다.
- * There's only one protection film on one side.



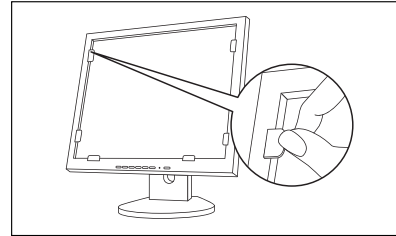
1. 행탭을 분리 합니다.
1. Separate hang-tab.



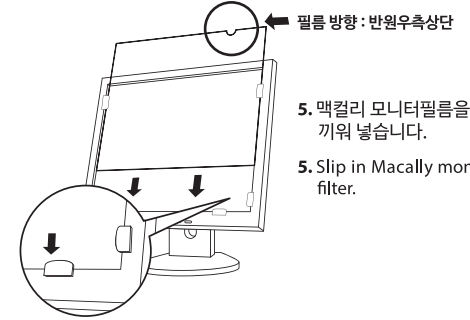
2. 분리된 행탭의 보호지를 제거합니다.
2. Remove the protective film from each hang-tab.



3. 맥컬리 모니터필름에 붙어있는 보호지를 제거합니다.
3. Get rid of the protection film attached on Macally monitor filter.

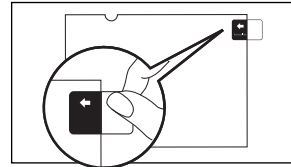


4. 모니터 프레임(테두리) 좌/우/하단에 행탭을 부착합니다.
4. Attach hang-tab on the frame of monitor.

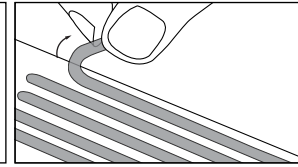


5. 맥컬리 모니터필름을 끼워 넣습니다.
5. Slip in Macally monitor filter.

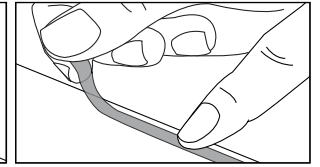
양면테이프 부착방법 INSTALLATION WITH DOUBLE-SIDED TAPE



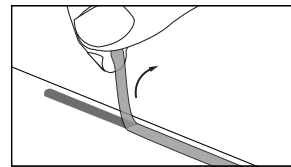
1. 맥컬리 모니터필름에 붙어있는 보호지를 제거합니다.
1. Get rid of the protection film attached on Macally monitor filter.



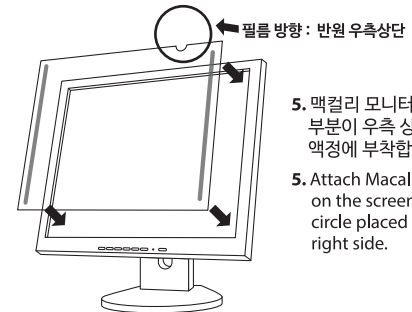
2. 그림과 같이 양면테이프를 떼어 냅니다.
2. Peel off the double-sided tape as shown on the picture.



3. 양면테이프를 맥컬리 모니터필름 뒷면(보호지를 제거한 면)가장자리에 붙입니다.
3. Attach double-sided tape on the back side of the monitor filter, at each corner (close to the edge).



4. 부착 후 양면테이프에 붙어있는 파란색 보호지를 제거 합니다.
4. Remove blue protective layer of the tape from monitor filter.



5. 맥컬리 모니터필름의 반원 부분이 우측 상단에 오도록 액정에 부착합니다.
5. Attach Macally monitor filter on the screen with the half circle placed on the top right side.